



EXPERIENCE THE MUSKOKA LIFESTYLE OF YOUR DREAMS
ICONIC INSPIRATION MEETS MODERN CONDO LIVING: 39 MODERN SUITES



Campus Trails
by GREYSTONE

INTRODUCING THE ALEXANDER CONDOMINIUM AT CAMPUS TRAILS:

- 4 stories & 39 modern suites
- Efficient icf construction
- Large architectural windows
- Timber rafters & pine soffits
- Spacious balconies
- Suites with rooftop terraces & spacious lofts
- Underground parking & storage
- “Smart” automation, secure access & lobby features
- Wellness amenities
- Social rooms
- Healthcare steps away
- Walking/hiking trails
- Surrounding forest views
- Community greenhouse and garden
- Fire pit lounge area
- Pickle ball court
- Units range in size from 850 to 1,350 sq.ft. with chef kitchens
- Nestled in 32 acres of lush Muskoka woods and green space
- Steps away from the Campus Trails Wellness Centre, physician’s office & health services
- Close and direct access to Fairy Lake, HWY 60 and Algonquin Park

FOR MORE DETAILS:

book an appointment: (705) 773-8833 | **email:** james@greystonecommunities.ca | **visit:** www.campustrailshuntsville.ca



A NEW ALTERNATIVE TO COMMUNITY LIVING
IN HUNTSVILLE, MUSKOKA



THE ALEXANDER CONDOMINIUM IS PART OF A CONSCIOUS
COMMUNITY PROMOTING WELLNESS AND ACTIVE LIVING,
WITH A MINDFUL CONNECTION TO NATURE

FOR MORE DETAILS:

book an appointment: (705) 773-8833 | **email:** james@greystonecommunities.ca | **visit:** www.campustrailshuntsville.ca



REFINED INTERIORS

The inclusive finishes and custom design can be carefully selected to satisfy your individual style. Expansive windows allow natural light to cascade in and bring you closer to nature. Higher ceilings and open concept floor plans make spaces feel larger, and full of life; and a large balcony offers you access to the outdoor lifestyle you desire.

Our experienced team will work with you in selecting your personalized finishes.

FINISHING TOUCHES

Suite Finishes

- Selection of Builder's Packages for finishes
- Consultation with design team for custom features
- New appliances – fridge, stove, dishwasher, microwave with integral exhaust hood and washer + dryer
- Tall baseboards, window casings and beautiful details
- Flooring options from builder specifications
- Quality architectural hardware in many colour finishes
- Quality light fixtures
- Smart system for building access, communication, high speed internet, telephone and automation

Chef's Kitchen

- Beautiful cabinetry, designed for the gourmet chef to entertain – with island or peninsula and breakfast bar (where shown in suite layouts)
- Quality faucets
- Double stainless steel sink
- Multiple selection options from Builder's Packages

Luxurious Bathroom Finishes

- Custom designed vanity
- Large mirror over vanities
- Full selection of modern fixtures to match your personal style
- Exhaust system in all washrooms coordinated with HRV for efficient energy conservation

FOR MORE DETAILS:

book an appointment: (705) 773-8833 | **email:** james@greystonecommunities.ca | **visit:** www.campustrailshuntsville.ca



BUILDING ELEVATIONS



SOUTHWEST
ELEVATION



SOUTHEAST
ELEVATION

FOR MORE DETAILS:

book an appointment: (705) 773-8833 | **email:** james@greystonecommunities.ca | **visit:** www.campustrailshuntsville.ca



BUILDING ELEVATIONS



NORTHWEST
ELEVATION



NORTHEAST
ELEVATION

FOR MORE DETAILS:

book an appointment: (705) 773-8833 | **email:** james@greystonecommunities.ca | **visit:** www.campustrailshuntsville.ca



UNDERGROUND PARKING & SOCIAL ROOM





1st, 2nd & 3rd FLOOR

GREAT
BEAR

SMART
RIVER

THE
VALLEY

THE
HILLS

THE
TREES

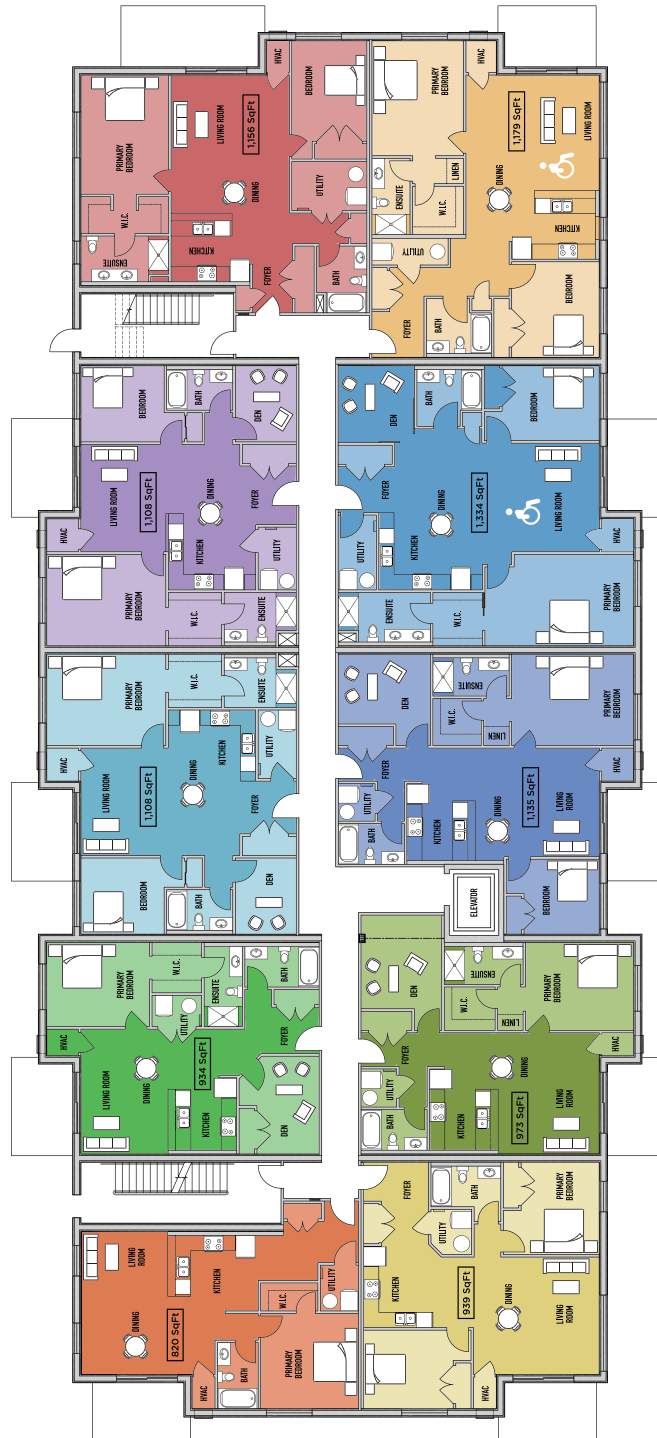
MARCH
STORM

RED
MAPLE

WINTER
MORNING

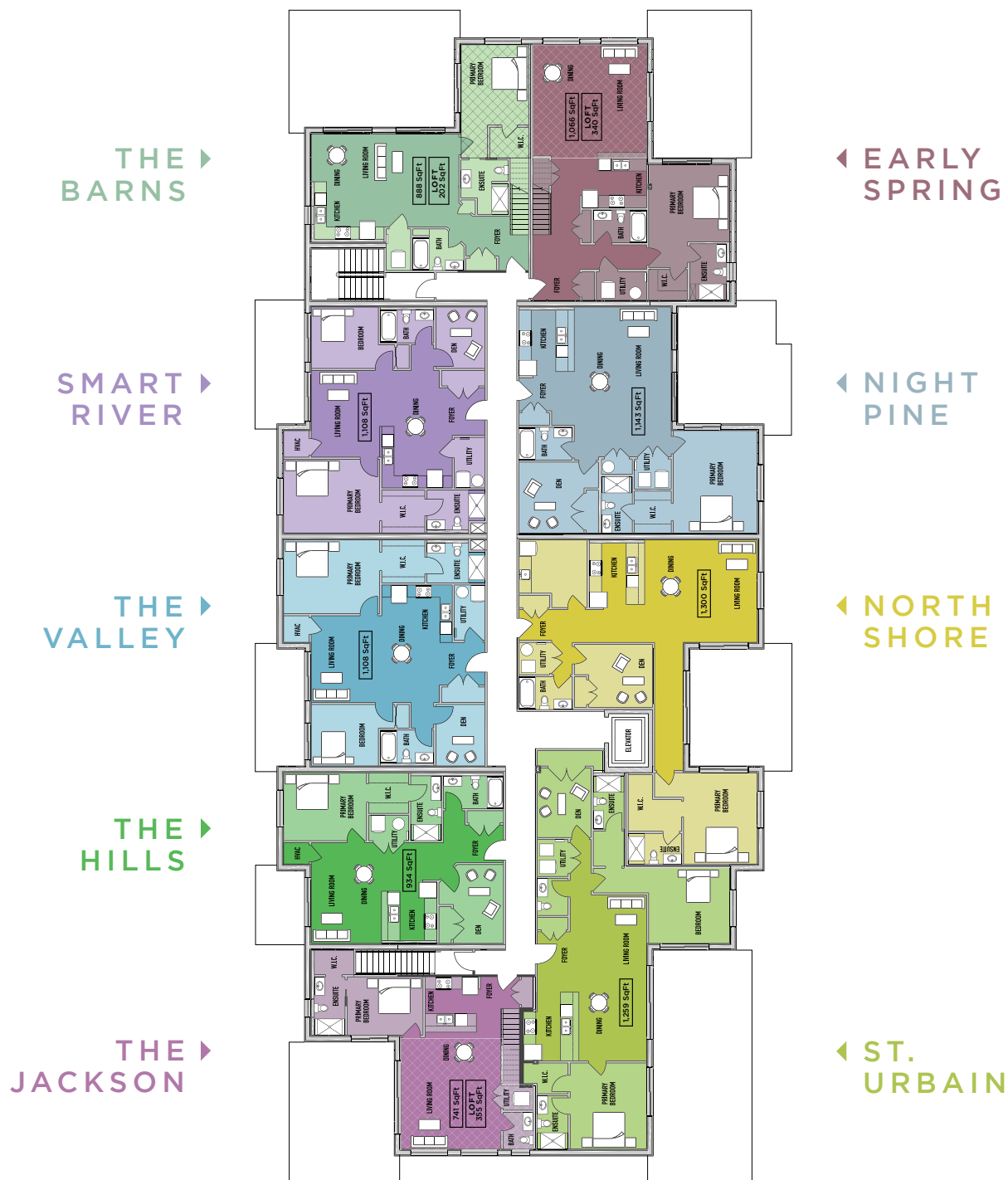
MAPLE
WOOD

THE
NELLIE





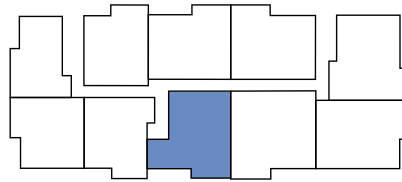
4th FLOOR





WINTER MORNING

SUITES 101, 201 & 301 | 1,135 sq.ft.
2 BEDROOMS + DEN - 2 BATHROOMS
EAST FACING BALCONY



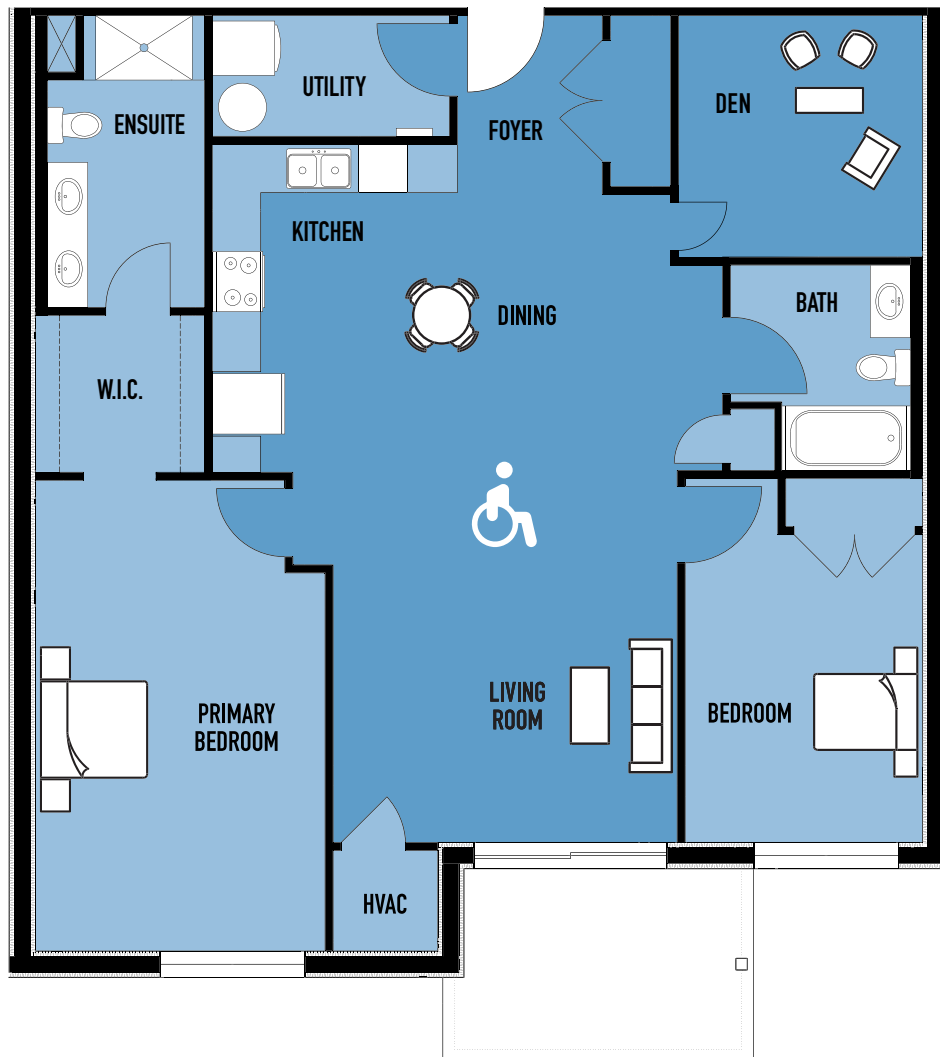
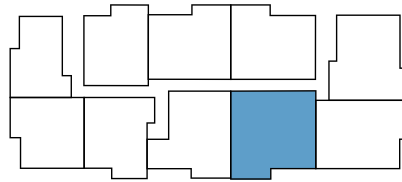
book an appointment: (705) 773-8833 | **email:** james@greystonecommunities.ca | **visit:** www.campustrailshuntsville.ca

All areas and stated dimensions are approximate. Mechanical location, actual usable floor space, living area and square footage may vary from stated floor area. E. & O. E



RED MAPLE

SUITES 102, 202 & 302 | 1,334 sq.ft.
2 BEDROOMS + DEN - 2 BATHROOMS
EAST FACING BALCONY



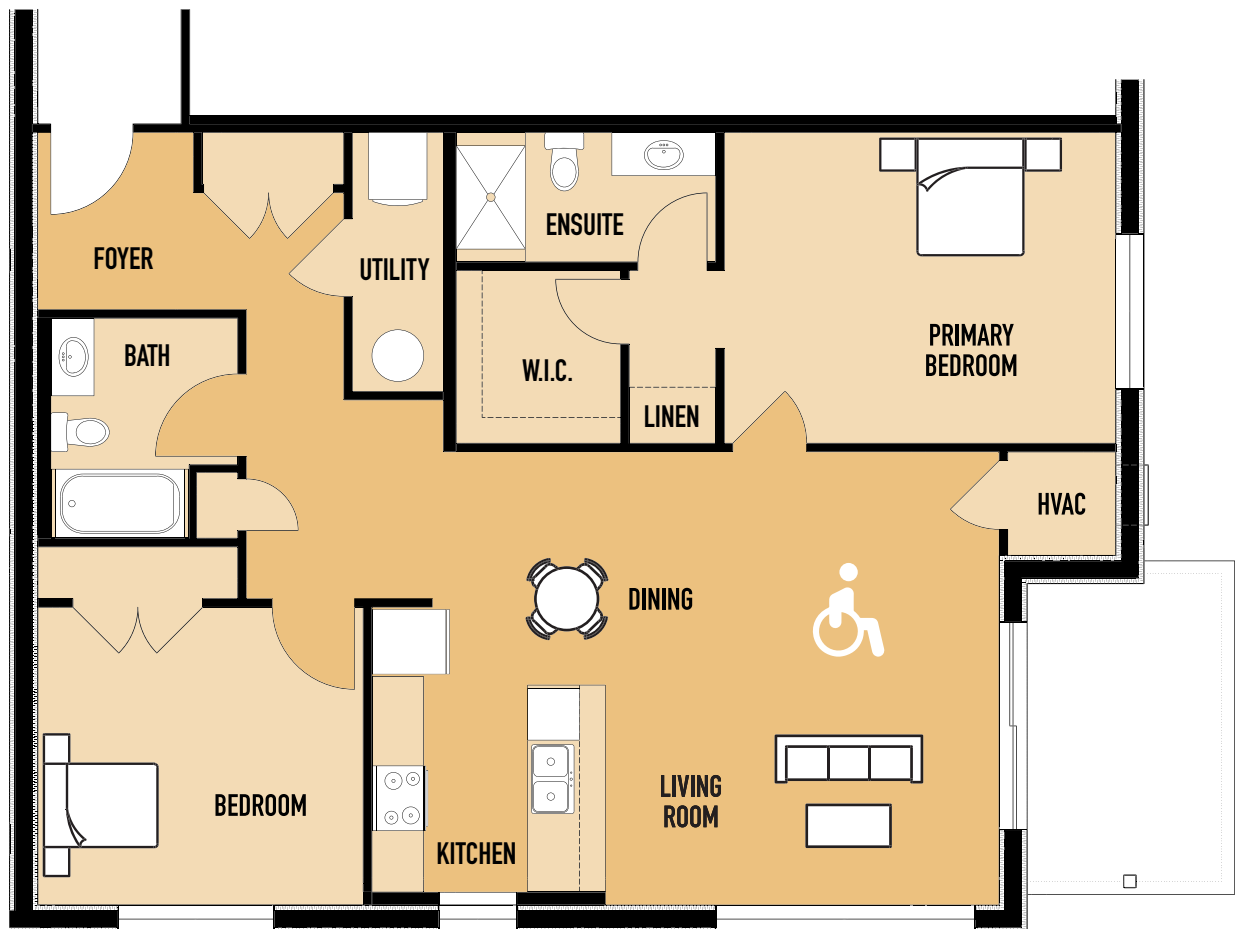
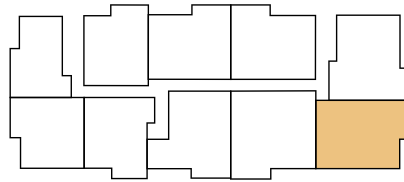
book an appointment: (705) 773-8833 | **email:** james@greystonecommunities.ca | **visit:** www.campustrailshuntsville.ca

All areas and stated dimensions are approximate. Mechanical location, actual usable floor space, living area and square footage may vary from stated floor area. E. & O. E



MARCH STORM

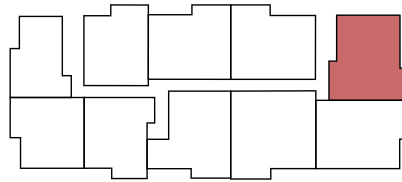
SUITES 103, 203 & 303 | 1,179 sq.ft.
2 BEDROOMS - 2 BATHROOMS
NORTH & EAST FACING BALCONY





GREAT BEAR

SUITES 104, 204 & 304 | 1,156 sq.ft.
2 BEDROOMS - 2 BATHROOMS
NORTH & WEST FACING BALCONY



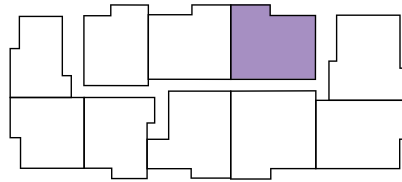
book an appointment: (705) 773-8833 | **email:** james@greystonecommunities.ca | **visit:** www.campustrailshuntsville.ca

All areas and stated dimensions are approximate. Mechanical location, actual usable floor space, living area and square footage may vary from stated floor area. E. & O. E



SMART RIVER

SUITES 105, 205, 305 & 405 | 1,108 sq.ft.
2 BEDROOMS + DEN - 2 BATHROOMS
WEST FACING BALCONY



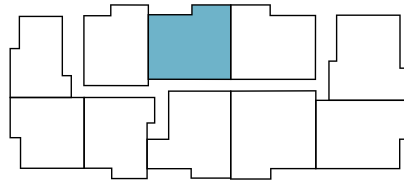
book an appointment: (705) 773-8833 | **email:** james@greystonecommunities.ca | **visit:** www.campustrailshuntsville.ca

All areas and stated dimensions are approximate. Mechanical location, actual usable floor space, living area and square footage may vary from stated floor area. E. & O. E



THE VALLEY

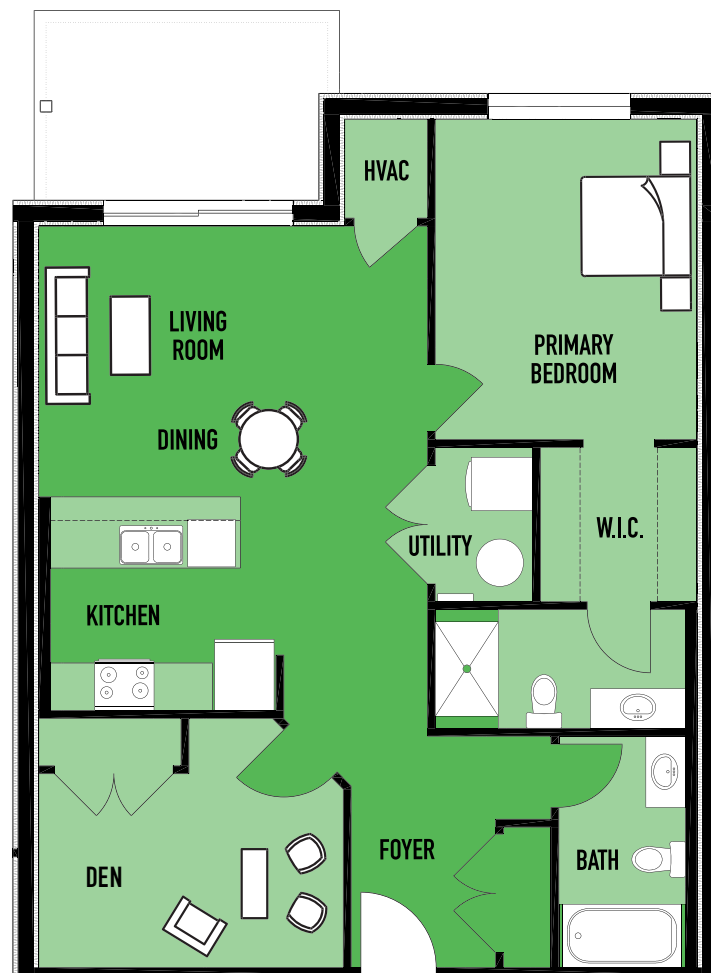
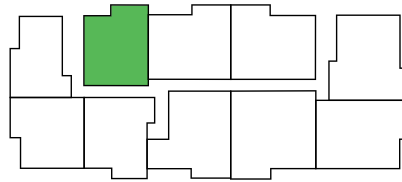
SUITES 106, 206, 306 & 406 | 1,108 sq.ft.
2 BEDROOMS + DEN - 2 BATHROOMS
WEST FACING BALCONY





THE HILLS

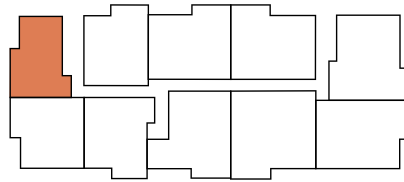
SUITES 107, 207, 307 & 407 | 934 sq.ft.
1 BEDROOM + DEN - 2 BATHROOMS
WEST FACING BALCONY





THE TREES

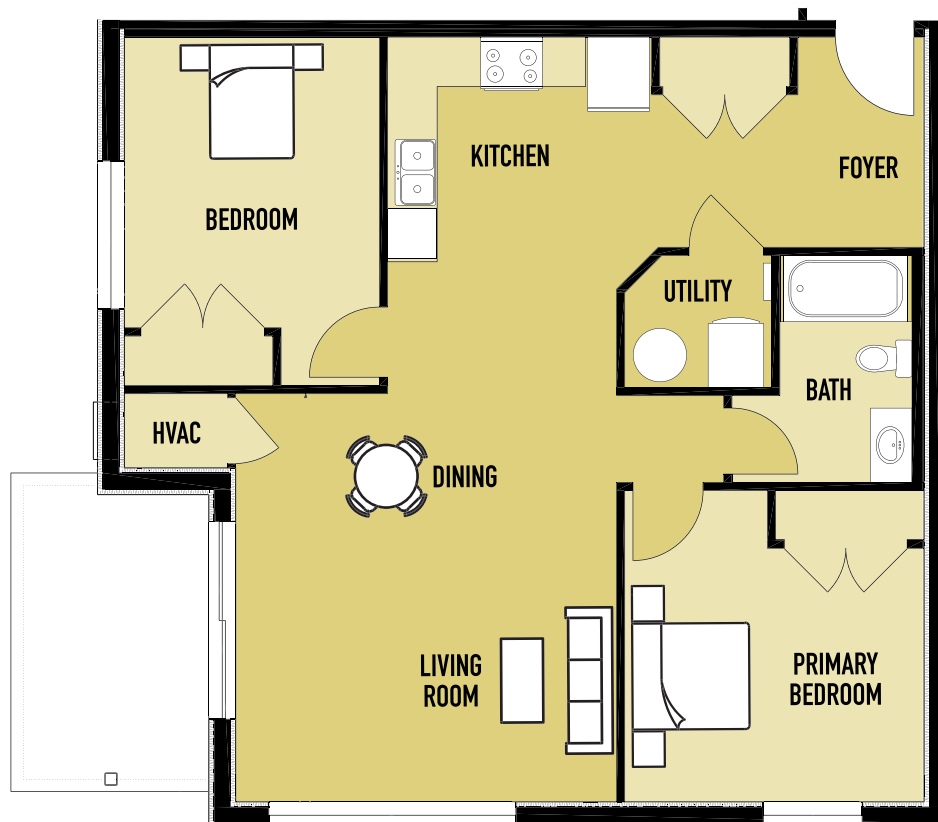
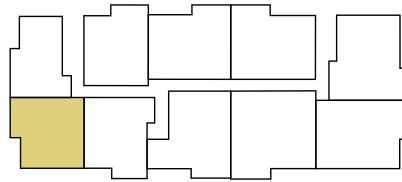
SUITES 108, 208 & 308 | 820 sq.ft.
1 BEDROOM - 1 BATHROOM
SOUTH & WEST FACING BALCONY





THE NELLIE

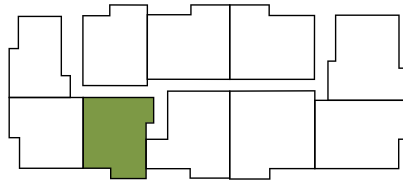
SUITES 109, 209 & 309 | 939 sq.ft.
2 BEDROOMS - 1 BATHROOM
SOUTH & EAST FACING BALCONY





MAPLE WOOD

SUITES 110, 210 & 310 | 973 sq.ft.
1 BEDROOM + DEN - 2 BATHROOMS
EAST FACING BALCONY



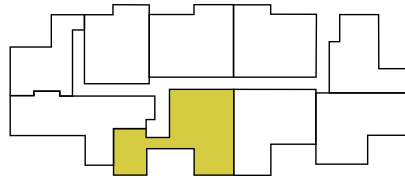
book an appointment: (705) 773-8833 | **email:** james@greystonecommunities.ca | **visit:** www.campustrailshuntsville.ca

All areas and stated dimensions are approximate. Mechanical location, actual usable floor space, living area and square footage may vary from stated floor area. E. & O. E



NORTH SHORE

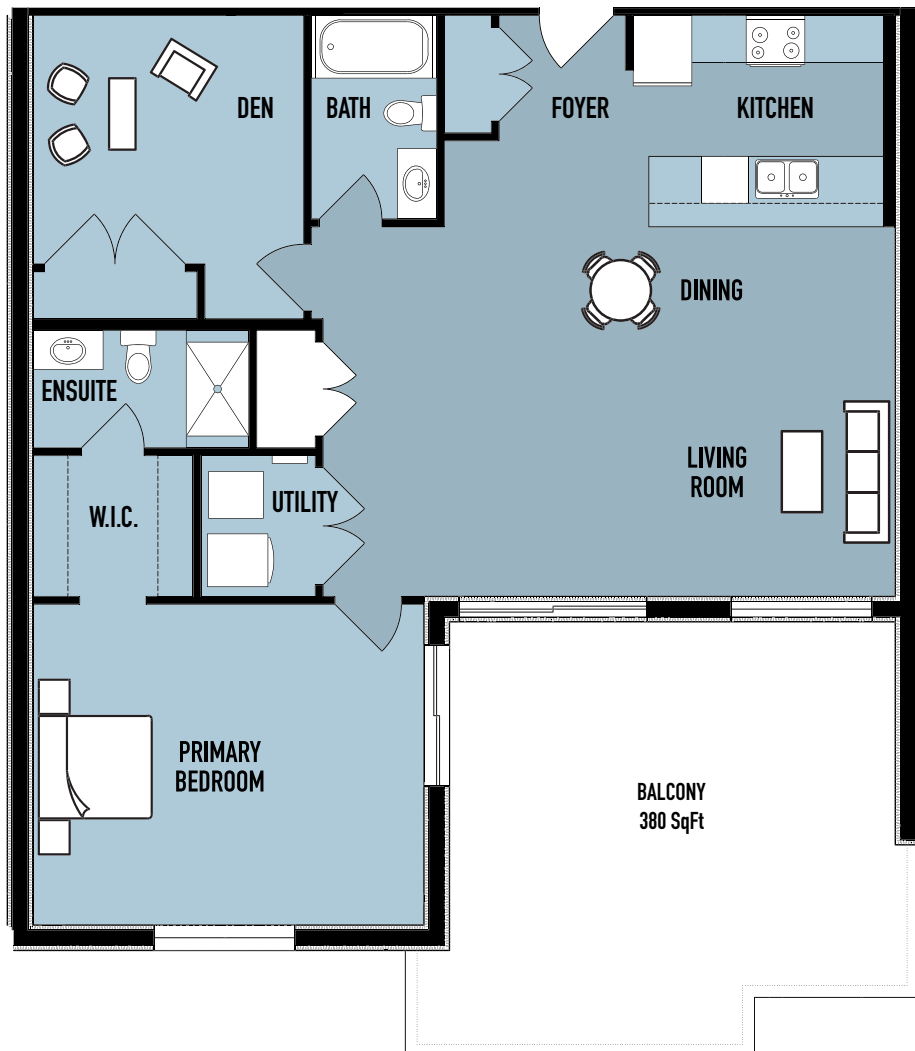
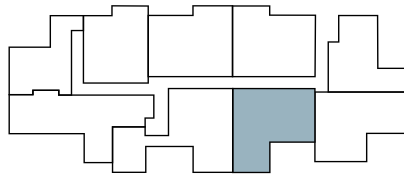
SUITE 401 | 1,300 sq.ft.
2 BEDROOMS - 1 BATHROOM
EAST FACING BALCONY





NIGHT PINE

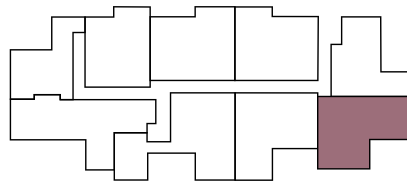
SUITE 402 | 1,143 sq.ft.
1 BEDROOM + DEN - 2 BATHROOMS
EAST FACING BALCONY





EARLY SPRING

SUITE 403 | 1,066 sq.ft. + 340 sq.ft. LOFT
1 BEDROOM - 2 BATHROOMS + TIMBER RAFTER DETAILS
EAST & NORTH FACING BALCONY



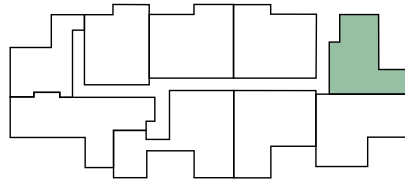
book an appointment: (705) 773-8833 | **email:** james@greystonecommunities.ca | **visit:** www.campustrailshuntsville.ca

All areas and stated dimensions are approximate. Mechanical location, actual usable floor space, living area and square footage may vary from stated floor area. E. & O. E



THE BARN S

SUITE 404 | 888 sq.ft. + 202 sq.ft. LOFT
1 BEDROOM - 2 BATHROOMS + TIMBER RAFTER DETAILS
NORTH & WEST FACING BALCONY



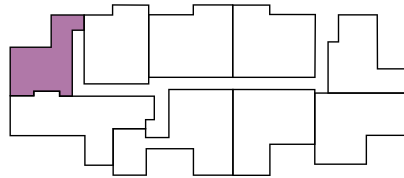
book an appointment: (705) 773-8833 | **email:** james@greystonecommunities.ca | **visit:** www.campustrailshuntsville.ca

All areas and stated dimensions are approximate. Mechanical location, actual usable floor space, living area and square footage may vary from stated floor area. E. & O. E



THE JACKSON

SUITE 408 | 741 sq.ft. + 355 sq.ft. LOFT
1 BEDROOMS - 2 BATHROOMS + TIMBER RAFTER DETAILS
WEST & SOUTH FACING BALCONY



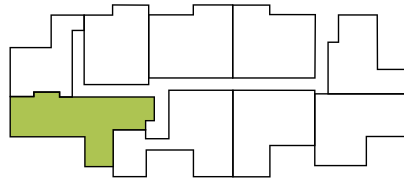
book an appointment: (705) 773-8833 | **email:** james@greystonecommunities.ca | **visit:** www.campustrailshuntsville.ca

All areas and stated dimensions are approximate. Mechanical location, actual usable floor space, living area and square footage may vary from stated floor area. E. & O. E



ST. URBAIN

SUITE 409 | 1,259 sq.ft.
2 BEDROOMS + DEN - 2 BATHROOMS
EAST & SOUTH FACING BALCONY





SITE MAP

20 CAMPUS TRAIL
HUNTSVILLE, MUSKOKA P1H 0E5

Campus Trails
by GREYSTONE



FOR MORE DETAILS:

book an appointment: (705) 773-8833 | email: james@greystonecommunities.ca | visit: www.campustrailshuntsville.ca